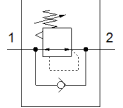
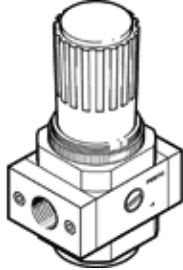


pressure regulator LR-1-D-O-DI-MAXI

Part number: 192365
Classic - do not use for new projects

FESTO

Directly-controlled regulator, working pressure up to 12 bar.
Modern alternatives can be found by entering the first four characters of the type code in the search field.



Data sheet

| Feature | Value |
|---|--|
| Size | Maxi |
| Series | D |
| Actuator lock | Rotary knob with lock |
| Assembly position | Any |
| Design structure | directly-controlled diaphragm regulator |
| Controller function | Output pressure constant with initial pressure compensation with secondary exhaust with return flow |
| Pressure gauge | Prepared for G1/4 |
| Operating pressure | 1 ... 16 bar |
| Pressure regulation range | 0.5 ... 12 bar |
| Max. pressure hysteresis | 0.4 bar |
| Standard nominal flow rate | 7,000 l/min |
| Maritime classification | see certificate |
| Operating medium | Compressed air in accordance with ISO8573-1:2010 [7:4:4] Inert gases |
| Note on operating and pilot medium | Lubricated operation possible (subsequently required for further operation) |
| Corrosion resistance classification CRC | 2 - Moderate corrosion stress |
| Air purity class at output | Compressed air in accordance with ISO8573-1:2010 [7:4:4] Inert gases |
| Medium temperature | -10 ... 60 °C |
| Ambient temperature | -10 ... 60 °C |
| Product weight | 1,330 g |
| Mounting type | Front panel installation Line installation with accessories |
| Pneumatic connection, port 1 | G1 |
| Pneumatic connection, port 2 | G1 |
| Materials note | Free of copper and PTFE Conforms to RoHS |
| Material of connecting plate | Zinc die-casting |
| Material seals | NBR |
| Material housing | Zinc die-casting |
| Material membrane | NBR |